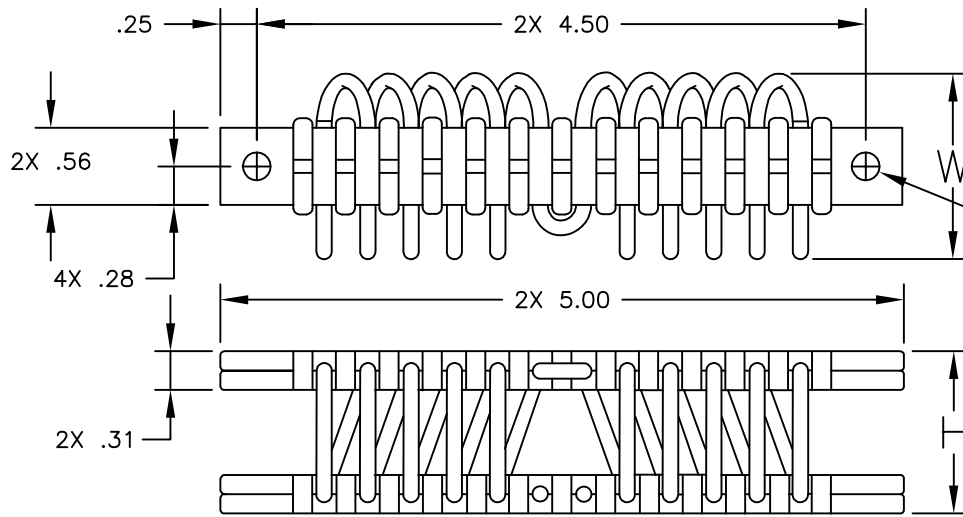


# C4 SERIES

## 1/8" WIRE ROPE



MOUNTING HOLE SUFFIX OPTIONS.

- [ ] BLANK=  $\phi$ .257 THRU 4PL
- C2=  $\phi$ .257 THRU  
C'SINK  $\phi$ .52 x 82' 4PL
- I2= #1/4-20 INSERTS 4PL
- CI= #1/4-20 INSERTS 2PL  
 $\phi$ .257 THRU  
C'SINK  $\phi$ .52 x 82' 2PL

ISOLATOR PART NO.	NOMINAL DIMENSIONS (in)		LOAD MODE	SHOCK AVERAGE K (lb/in)	VIBRATION AVERAGE K (lb/in)	MAX. RATED DYNAMIC TRAVEL (in)
	H $\pm$ .06	W(REF)				
C4-H-310-[ ]	1.10	1.40	COMPRESSION SHEAR/ROLL 45 DEG. C/R	600 300 220	800 290 450	.40 .50 .70
C4-H-410-[ ]	1.20	1.50	COMPRESSION SHEAR/ROLL 45 DEG. C/R	480 240 185	710 225 370	.50 .60 .80
C4-H-510-[ ]	1.30	1.60	COMPRESSION SHEAR/ROLL 45 DEG. C/R	295 145 100	475 115 285	.60 .70 .90
C4-H-610-[ ]	1.40	1.70	COMPRESSION SHEAR/ROLL 45 DEG. C/R	255 115 80	405 80 255	.70 .80 1.00
C4-H-710-[ ]	1.50	1.80	COMPRESSION SHEAR/ROLL 45 DEG. C/R	200 90 65	340 75 190	.80 .90 1.10
C4-H-810-[ ]	1.60	1.90	COMPRESSION SHEAR/ROLL 45 DEG. C/R	170 85 55	280 55 160	.90 1.00 1.20

OTHER MATERIALS, COMPOUNDS, OR FINISHES WITH EQUAL OR SUPERIOR PROPERTIES MAY BE SUBSTITUTED AS THEY BECOME AVAILABLE.

**CERTIFIED FOR:**

JOB NAME: \_\_\_\_\_  
 CUSTOMER: \_\_\_\_\_  
 CUSTOMER P.O.: \_\_\_\_\_  
 SALES ORDER: \_\_\_\_\_

### MODEL C4 SERIES HELICAL WIRE ROPE ISOLATOR



**THE VMC GROUP**  
*The Power of Together*  
 Bloomingdale, NJ 07403  
 Houston, TX 77041

SCALE:

NONE

SHEET:



DRAWING NO.:

REVISION